



LODDON PLAINS LANDCARE NETWORK

Annual Report 2019



Healthy environment - Healthy agriculture - Sustainable communities
To protect and enhance biodiversity across the Loddon Plains





The GOANNA logo image depicts images of circles, dots, wheat grains, water droplets, leaves, and solid wavy lines embedded into the shape of a goanna. These images represent the People, Agriculture, Irrigation, Conservation, Diverse Communities, Corridors and Biolinks of revegetation throughout the Loddon Plains.

This image embodies the guiding principles of our Network, illustrating that by working together, the potential for socially acceptable landscape change and long term sustainable agriculture can be realised. The GOANNA acronym represents ‘Group Organised Action Nurturing Natural Assets’ which is what we are achieving. It also is a great image as our Network’s area has two species of Goanna, the Tree Goanna (*Varanus varius*), sometimes known as the Lace Monitor, and the Sand Goanna (*Varanus gouldii*).

Project Partners

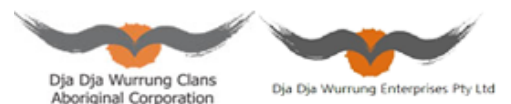


Table of Contents

SECURING HEALTHY LANDSCAPES ON THE LODDON PLAINS4

PRESIDENT’S REPORT5

FACILITATOR’S REPORT6

LANDCARE7

GOANNA PROJECT8

 WHEEL CACTUS PROGRAM - MT BUCKRABANYULE9

 LONG SWAMP WETLAND RESTORATION 10

 LAKE BAE BAE AND KERANG LAKES RESTORATION AND CULTURAL AWARENESS PROJECT..... 11

 SUSTAINABLE AGRICULTURE..... 12

ACHIEVEMENTS AT A GLANCE..... 13

FINANCIAL REPORT 14

COMMITTEE OF MANAGEMENT 2018 - 2019 15



Healthy environment - Healthy agriculture - Sustainable communities
To protect and enhance biodiversity across the Loddon Plains





Securing Healthy Landscapes on the Loddon Plains

Since 2009, our Network of Landcare groups has successfully worked across the Loddon Plains in North Central Victoria. Our network has 18 groups, comprised of passionate people who are interested in improving their local environment. Our groups have been managing and protecting water resources, managing the health of their soils, improving agricultural practices to increase productivity, managing invasive pest plants and animals, protecting significant native flora and fauna, and undertaken activities that enhance natural values and agricultural returns.

Our network has more than 300 land managers, responsible for 300,000 hectares of private land, with many members also voluntarily assisting in the management of our public lands.

We work closely with government bodies, such as Parks Victoria, NCCMA, GWM Water, DEDJTR, DELWP and Loddon Shire, and in conjunction with Non-Government Organisations, such as Wettenhall Environment Trust, Dja Dja Wurrung Enterprise and Dja Dja Wurrung Corporation, Trust for Nature and Bush Heritage.

As a Network, we have successfully and collaboratively achieved our Network's stated objectives of:

- ✓ Landscape wide Conservation,
- ✓ Restoration and Enhancement of Biodiversity
- ✓ Community wide, multidisciplinary approach for caring for the environment
- ✓ Promote Sustainable Land and Water management practices that:
 - Balance economics and ecology,
 - Balance productivity and resource protection
 - Encourage sustainable agriculture.
- ✓ Support and represent the Member groups
- ✓ Broadcast information on Landcare and related matters
- ✓ Represent the interests of Network members on committees, bodies and associations
- ✓ Employ suitable qualified people as funds allow to assist in the coordination of initiatives and objectives of the Network
- ✓ Raise funds by gift or subscription as the committee of management may see fit.

Our Member Groups

Bendigo Creek Floodplain Group	Mologa Landcare
Canary Island Landcare	Mt Korong Eco-Watch
East Loddon Landcare	North Central Landcare
Fairley Bael Bael Sandhill Lake Landcare	Northern Plains Conservation Management Network
Friends of Kooyoora	Northern United Forestry Group
Friends of Terrick Terrick National Park	Salisbury West Landcare
Inglewood Urban Landcare	Terricks Ridge Landcare
Kamarooka Landcare	Wedderburn Conservation Management Network
Loddon Vale Landcare	Wychitella District Landcare

The Earth will not continue to offer its harvest, except with faithful stewardship. We cannot say we love the land and then take steps to destroy it for use by future generations.

- Karol Józef Wojtyła

President's Report



LPLN President Ian Penny

This year has been a busy and positive period for the Loddon Plains Landcare Network. Our three main tasks have been extermination, restoration and conservation. The wheel cactus continues to haunt us as a major weed that needs to be suppressed as we search for new ways to control this difficult weed.

I would like to thank all our Groups in the LPLN for their work in controlling weeds and helping to restore our environment. I would also like to take this opportunity to thank our partners, particularly Wettenhall Environment Trust and North Central CMA for their ongoing support to the LPLN.

The LPLN Blueprint for Action and companion project assessment obtained from Jim Radford has acted as an effective guide to operations and will continue to do so through revision of this strategy

in 2019 and beyond. This combined with the LPLN's new Sustainable Agriculture Strategy by Mal Brown will help guide us towards the future as we embark on a journey to bring biodiversity and agriculture together effectively.

We farewelled our Facilitator James Nelsson on 1st February this year. We thank James for his contribution to our Network.

Danny Pettingill is our new facilitator and has grown into his role well and is making an important contribution to our Network.

I wish to thank the LPLN Committee for supporting me these 12 months. A big thank you to Michael Moore our diligent and efficient Secretary, to Kate Lee in her role as Treasurer and thanks also to both James and Danny for helping to keep this Network running smoothly.

Thanks also to my wife Kaye for her support during the year.

Let us remember that small steps can achieve big results. With every weed we suppress and every three we plant we are making the world for our descendants and that should always be our goal.

Ian Penny

President, Loddon Plains Landcare Network



Facilitator's Report



LPLN Facilitator Danny Pettingill

What a wonderful experience I have had since taking on this role in February getting to know the wonderful communities that make up the Loddon Plains and the Network's 18 Landcare and Friends groups across the region.

First, I would like to thank my predecessor James Nelsson for the hard work and dedication he has shown during his time as Facilitator, and wish him all the best in his new role.

Since February we have embarked on some exciting journeys into Sustainable and Regenerative Agriculture, revitalising and reinforcing partnerships with stakeholders such as the North Central Catchment Management Authority, Parks Victoria, Dja Dja Wurrung, Agriculture Victoria, Vic No-Till and myriad other agencies and community groups and continued to develop strong working relationships for the betterment of LPLN projects and the Loddon Plains community.

I have sought to adopt and evolve new practices and approaches to strengthen the way in which the LPLN undertakes projects in conservation and agriculture to better support

our groups and members. I have spent many hours talking in farm utes, walking paddocks and having cups of tea to better understand the very different landscapes across the area and develop projects that are meaningful and important to the LPLN members.

Some of the notable achievements this year have been numerous highlighted by:

- Establishing the LPLN office in the Inglewood Community Hub providing a physical Network presence and also allowing for events and meetings to be held in an LPLN space. This has assisted us in building further capacity in our operations and provided greater efficiency in administrative and relational matters for the Network.
- The Network's first attendance at the 2019 Elmore Field Days, exhibiting with North Central Catchment Management Authority. This provided a great opportunity to engage with people from the Loddon Plains area and beyond to talk about projects, activities and the groups across the area. It also allowed us to engage with people unaware of the LPLN or people interested in the Landcare movement.
- A major highlight has been developing a Loddon Plains Landcare Network Sustainable Agriculture Strategy and I look forward to working together to implement meaningful projects and programs that incorporate environment and agricultural outcomes to provide improved environment, social and economic benefit for family farming operations across the Plains.



Top: School group undertaking plantings. Bottom, Danny Pettingill presenting to Weed management group, Melbourne

Personally, I have embarked on a steep training curve, focusing on the area between conservation, biodiversity and sustainable agriculture practices and using this as an avenue to continue to support the members and goals of the LPLN.

This has included being awarded a Leadership Development in Innovation grant through DELWP to better understand relationships between groundwater hydrogeology, soil health, carbon sequestration and healthy flora and fauna populations to enhance sustainable farming practices and conservation of the environment through improved biodiversity.

I thank the LPLN Committee of Management for their unwavering support and invaluable advice since entering this role. I would also like to thank our wonderful supporters, Wettenhall Environment Trust, North Central Catchment Management Authority and the Victorian Landcare Facilitators Program team at DELWP.

Without this support the outstanding achievements and support provided to the LPLN community would not be possible.

Lastly, a special thanks must go to the groups and Network members. Thanks for being so welcoming, for sharing your knowledge, for laughing, and for supporting to me in this position. It has been a truly wonderful time and I can't wait for it to continue, again, Thank you. 🐘

Landcare



MKEW at Mt Rothwell Conservation and Research Reserve

With very low rainfall some groups have instead turned focus to controlling weeds and pests that have thrived in the drier climate that has persisted for the last couple of years and towards upskilling in other areas such as mapping and conservation of important species to the local area.

Wheel cactus across the Network has been one of these focuses, with Friends of Kooyoora, Kamarooka Landcare and Northern United Forestry Group, Mount Korong Eco-Watch, Wedderburn Conservation Management Network and Wychitella Landcare tackling this species across many parts of the LPLN area. To complement the efforts of these groups, the Network has also continued to engage with Bush Heritage, Bendigo Orienteers, Bendigo Tafe and others to continue the management of wheel cactus in the area.

At a group level, this year has been one of celebration with the Wedderburn CMN, Friends of Kooyoora and Mt Korong Eco-Watch delivering the North Western Goldfields Intermittent Soaks project. Northern Plains CMN has continued the incredible work with Trust for Nature and Parks Victoria in protecting the Plains Wanderer, Friends of Kooyoora again presenting the Kooyoora Wildflower Show along with Friends of Terrick Terrick presenting its Activities weekend as part of the Naturally Loddon Festival and Northern United Forestry Group celebrating its 21st Birthday.

The year has also been one of regeneration with Salisbury West Landcare undergoing a resurgence and re-focus and North Central Landcare coming back together to form part of a catchment wide regenerative farming program supported through the NCCMA.

There have been a number of workshops and engagement opportunities involving member groups and other community groups across the area. These events have included mapping and monitoring workshops, planting days, information, education and planning sessions and other events.



Drosera aberrans, Kooyoora State Park

This year has been a big year for review and consolidation. Numerous meetings have been attended and a lot of listening has happened. The result of this has been a thorough consultation process on the projects that our groups would like to pursue and how the Network can assist with this.

This year's overall dry conditions have presented significant challenges for on ground works and activities but this has not stopped the Networks committed and passionate groups.



MKEW member Kate Lee planting seedlings with Interchange group

These events have provided opportunities to share knowledge across the Network and also across agencies and NRM groups such as Dja Dja Wurrung, Parks Victoria, Ag Victoria, Bendigo Orienteers, Bendigo Home School Network, Loddon Mallee Interchange group, Bendigo Tafe, LaTrobe University and others. 🌱

GOANNA Project

2019 has seen a good period of consultation and revision of the GOANNA project and how the Network plans these projects into the future. This planning has included significant consultation through Landcare group meetings and a Network wide survey to identify the priorities important to the Network groups and also to assist in identifying new projects to pursue that fit with the values of the LPLN. This process has had significant contribution from our groups and has seen approximately one third of the Network's member base have a say via the community survey.

The Network again undertook its Committee of Management bus trip, focusing on GOANNA outcomes and future projects of potential. This gave CoM members a good opportunity to see the benefits of the program and also an understanding of past and future priorities in the Network.

Working together with Traditional Owner groups, Parks Victoria, Agriculture Victoria and North Central CMA has allowed the Network to better place itself



Graeme Bear in native pastures
Photo: John Childs

to work with other stakeholders and has demonstrated the ability for an increased capacity in delivering large-scale restoration projects effectively and efficiently. Attending events such as the *Dja Dja Wurrung and Parks Victoria Joint Management Agreement* briefing and *Understanding Country (cultural and biodiversity) outcomes from Dry Forest ecosystem management practices* event have provided good conversations in how we can work together with Traditional Owners to identify shared outcomes and values within large landscape projects.

With significant funding opportunities opening later in the 2019/20 year, this is a good time to revise the Network's GOANNA project strategy and provide a direction moving forward into the next four to five years.

This year has also seen the official close and acquittal of the Calivil Creek 20 Million Trees project (2015-17) and the near completion of the Long Swamp restoration project (2017-18). It has also seen the Network's latest project, *Lake Bael Bael and Kerang Lakes Restoration and Cultural Heritage and Significance Project* commence. 🌿



Clockwise from top left: Dja Dja Wurrung Parks Joint Management Plan briefing with Landcare facilitators, ecologist Damian Cook at Gunbower presenting to Victorian North Central RAMSAR group, Stag tree on Kerang wetlands, La Trobe University students managing wheel cactus on Mt. Buckrabanyule (photo: James Nelsson)

Wheel Cactus Program - Mt Buckrabanyule

Network volunteers and residents continue to work on this program.

There have been productive conversations between LPLN, Landcare groups, conservation groups and other agencies for a new approach in management of the Wheel Cactus around Mt Buckrabanyule and discussions continue.

This year has seen numerous volunteer hours from member groups, Tafe and

university. It has also seen the return of the Corrections Victoria LANDmate program to conduct further works. A drop in access to funding sources has limited the ability to continue controlling this highly invasive species. With this in mind, the Network has been looking for other alternatives to continue its works.

The year has also seen this program and issues faced featured in presentations at the Victorian Weeds Conference in Echuca and as part of a newly formed Community of Practice in pests and invasive species, an initiative of Agriculture Victoria and DELWP.

These presentations largely focussed on how community and agencies can change the approach to weed management and come together through collaborative relationships. The presentations were very well received and have provide further opportunity in engaging with other groups and agencies working in the weed management area in order to find efficient ways in managing this site and the spread of the weed to the surrounding areas in a collaborative way.

This species continues to remain a significant threat to the environment and to agricultural operations, with the aggressive spread of this weed starting to establish populations from Buckrabanyule through the southern part of the Network taking in Mt Korong, Brenanah, Kooyoora State Park and moving through Raywood, Kamarooka and Tandarra areas in the east.

The effort to contain the spread and further establishment of this species is best acted upon early. When found, grub it out and remove the entire plant. These should be buried or solarised to destroy the pads and seeds.

Control of the species through this project has continued to provide good results in destroying individual plants but there is more work required before this species is regarded as being controlled. To do this, the Network must continue to work with all stakeholders and sought further finding opportunities on an ongoing basis to have a significant impact and protect both the environment and our agriculture sector from its invasion.

Further information can be found through contacting the LPLN or on the Agriculture Victoria website. 🦎



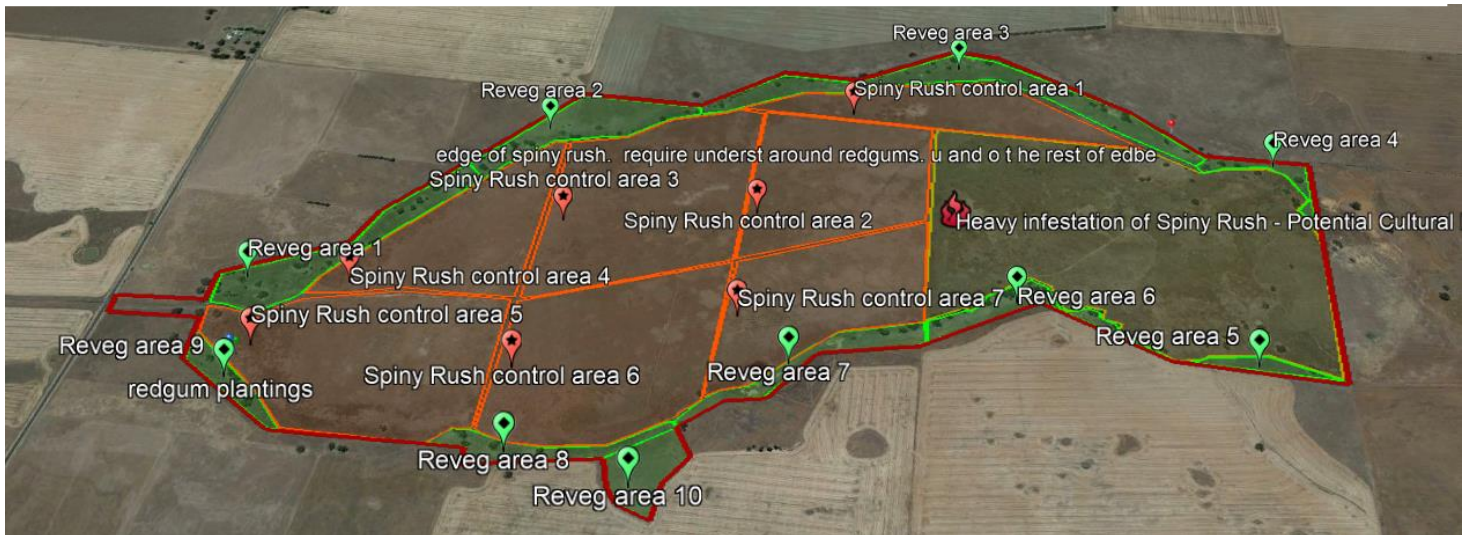
Mt Buckrabanyule Wheel Cactus march down the mountain. Photo: James Nelsson.



Treated and untreated Wheel Cactus on Mt. Buckrabanyule

Long Swamp Wetland restoration

An ephemeral wetland, located within the Moolort plains. The 180 hectare site has been reinvigorated with in excess of 500 River Red Gum (*Eucalyptus camaldulensis*) plantings and a number of understory and grass species including the nationally endangered Matted Flax-lily (*Dianella amoena*), food and fibre plant Murnong or Yam Daisy (*Microseris lanceolata*), Cranberry Heath (*Astroloma humifusum*) and Kangaroo Grass (*Themeda triandra*) planted across 10 revegetation sites.



Long Swamp site mapping

To protect these planting, exclusion plots were erected for understory plantings and tree plantings were protected with heavy-duty wire cages.


A majority of this site had been overrun with Spiny Rush (*Juncus acutus*), particularly in the centre. Through this project approximately 100 hectares of control has been delivered.

Through the year the LPLN engaged Dja Dja Wurrung Enterprises to deliver these works and both groups have worked closely together with the North Central Catchment Management Authority and Trust for Nature in the design, management and delivery of this project.

With the unusually dry conditions, planting into this environment has required additional watering through the hotter months and, though not as damaging as first thought, the site suffered from the seasonal heat and little rainfall. Tree plantings on the south and southeast of the site have been effected, as were the grass and understory plots.



Due to conditions, remaining weed control work was held over until this Spring season, once these works have been completed LPLN is working towards a handover of the project in December 2019.

This Trust for Nature property is a significant environmental asset with important cultural heritage values. Once established, the result of this project will assist Long Swamp in again becoming a functional ephemeral wetland, episodically providing habitat for wetland birds like the Brolga to breed and allow for the recharge of water back into the natural aquifer. 

Lake Bael Bael and Kerang Lakes Restoration and Cultural Awareness Project



Aerial view of Lake Bael Bael and Lt. Lake Bael Bael

The current LPLN project, Lake Bael Bael Aims to deliver community and environmental outcomes encompassing community engagement, chemical handling training and on-ground environment works.

The focus of this program includes community engagement and landholder training assistance with pest control and chemical handling for landholders, tours with Barapa Barapa and Wamba Wamba Traditional Owners with focus on the significance of lunettes around the area, species and environment awareness.

The project will also include planting, advocacy and awareness of the Murray Pine or Slender Cyprus Pine (*Callitris gracilis* ssp.). A significant species to the area, this species was highly prized for a number of uses on the land

and as product for furniture, cladding etc. resulting in significant clearing of the species across the area.

This tree species once provided a food source to the Red-tailed Black Cockatoo with both prominent in the stories of Traditional Owners. The work includes plantings of this species, Buloke (*Allocasuarina luehmannii*) and a broader plant community of understory within existing infrastructure in the Lake Bael Bael area.


Work is happening with the community and other stakeholders including Fairley Bael Bael - Sandhill Lake Landcare group, Barapa Barapa Wamba Wamba Traditional Owners, local school and community groups and North Central CMA to deliver the program.

The delivery of cultural workshops with Traditional Owners will allow an opportunity for community members to attend and learn about the values and history of the area. This opportunity also provides LPLN and Traditional Owners a channel to provide pest and environmental management strategies to the community with public agencies as part of an integrated management approach.

As an extension to the Community awareness campaign, a small publication will identify and record significant cultural and environmental values of the area, including projects being delivered. This publication will act as a resource for community and provide information on identified values including cultural, environmental and specific material.

Outcomes the Network is working towards include:



- Interaction and engagement of community through planting sessions, workshops and training,
- Promotion and advocacy of the importance of ecosystem and diversity that revegetation projects provide.
- Revegetation work, tours and workshops with community groups across the area to reinforce awareness and provide local environment knowledge around Slender Pine, Buloke and its surrounding plant community
- On-ground outcomes around the Lake Bael Bael area. 



A full Lt. Lake Bael Bael

Sustainable Agriculture

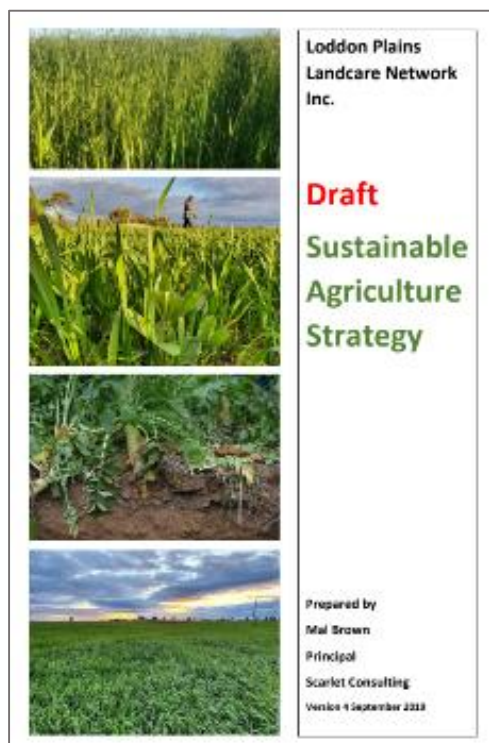
In 2019, LPLN embarked on a new and exciting journey in Sustainable Agriculture support and innovation.

This program has been driven by what the Network has heard from its members and stakeholders and has been designed with the intention to support local farming families in adopting and implementing sustainable practices resulting in improved biodiversity through effective environment and agricultural outcomes to provide improved environment, social and economic benefit.

As part of this journey the Network has worked closely with former LPLN President, Mal Brown, to create a Loddon Plains Landcare Network Sustainable Agriculture Strategy. This strategy will help provide structure to future planning and provide the structure for future funding opportunities.

To complement the Network's activity in this area, Facilitator Danny Pettingill has also received a DELWP Leadership in Innovation grant to undertake a program focusing on understanding relationships between groundwater hydrogeology, soil health, carbon sequestration and healthy flora and fauna populations to enhance sustainable farming practices and conservation of the environment through improved biodiversity.

This program will provide the Network with a greater capacity to work with local farming enterprises and communities to create awareness of and introduce new practices in agriculture to adapt to a drying climate. 🦎



LPLN presence at 2019 Elmore Field Days



LPLN Sustainable Ag planning workshop. Top: Ben Boxshall presenting on Agro forestry. Bottom: Grant Sims presenting his methods in practice at Pine Grove

Achievements at a Glance

NETWORK/NETWORK SUPPORTED	2018/2019
Projects operational	10
Projects completed or acquitted	5
Property plans/consultations	11
Member groups	18
Applications written or reviewed	22
Kilometres driven	29,140 km
On-ground works	
Weed control	150 ha
Cactus control (volunteer hours)	600
Cactus control (paid or granted hours)	256
Understorey plantings	620
Hectares of ephemeral wetlands protected	180 ha
Hectares total area protected	186 ha
Tubestock planted with follow up watering	650
Community engagement	
Events	59
Participants	560
Training/events	16
Blog/website posts/articles	10
Facebook posts	140
Interactions and social engagements	374
Monitoring	
Bird monitoring surveys	180
Networking/lobbying	
Weed Control Committee meetings	2
Meetings attended	135
Workshops	21
Officially represented Landcare	59
New partnerships	3
Strategy and planning	
Workshops	3
Surveys completed	90
Sustainable Agriculture Strategy	1
Future projects developed or designed	4

Financial Report

Profit and loss

LODDON PLAINS LANDCARE NETWORK

For the year ending 30 June 2019, accrual basis

CODE	ACCOUNT	AMOUNT
INCOME		
-	41600 - BFF	\$10,000.00
-	4150 - Kamarooka Wetlands Project	-\$5,000.00
-	40880 - DELWP	\$53,844.53
-	40500 - NCCMA Grant Income	-
-	40505 On ground Grant 2017-2018	\$5,000.00
	Total 40500 - NCCMA Grant Income	\$5,000.00
-	40000 - Income	-
-	40507 - NCCMA Support Grant 2018	\$550.00
-	40035 - Interest Received	\$1,571.20
-	40010 - LPLN - Memberships	\$109.08
	Total 40000 - Income	\$2,230.28
TOTAL INCOME		\$66,074.81
GROSS PROFIT		\$66,074.81
EXPENSES		
-	60600 - BFF Grant	\$8,893.45
-	51100 - 2017-2018 NCCMA Wetlands Project	-
-	51108 - 2017-2018 NCCMA Wetlands Materials	\$14,143.64
-	51106 - 2017-2018 NCCMA Wetlands Weed Treatment	\$13,000.00
-	51103 - 2017-2018 NCCMA Wetlands Plant/Reveg	\$1,696.36
	Total 51100 - 2017-2018 NCCMA Wetlands Project	\$28,840.00
-	51080 - 2017-2018 Schools Engagement	-
-	51088 - 2017-2018 Schools Engagement Materials	\$41.15
	Total 51080 - 2017-2018 Schools Engagement	\$41.15
-	51070 - 2017-2018 Cactus Grant	-
-	51078 - 2017-2018 Cactus Grant Materials	\$3,130.83
-	51076 - 2017-2018 Cactus Grant Weed Treatment	\$1,050.00
	Total 51070 - 2017-2018 Cactus Grant	\$4,180.83
-	51030 - 2015-2016 Network Grant	-
-	51038 - 2015-2016 Network Materials	\$57.27
-	51035 - 2015-2016 Network Grant Site Preparation	\$54.55
	Total 51030 - 2015-2016 Network Grant	\$111.82
-	60400 - Pyramid Hill FSS	\$687.27

CODE	ACCOUNT	AMOUNT
-	60440 - Activity 4	\$228.85
-	60420 - Activity 2	\$1,256.90
	Total 60400 - Pyramid Hill FSS	\$2,173.02
-	60100 - Superannuation	\$5,859.07
66000	60000 - Payroll Expenses	\$63,332.65
-	50555 - Donations	\$100.00
-	50200 - FSS	-
-	50230 - Soils Assement	\$76.11
-	50220 - Group Learning	\$1,278.95
-	50210 - Facilitation	\$76.29
	Total 50200 - FSS	\$1,431.35
-	50000 - Business Services	-
-	500006 - Registration	\$546.36
-	50140 - Sundries	\$237.98
-	50120 - Repairs & Maintenance	\$40.91
-	50100 - VLLFI -Project Worker	-
-	50107 - Travel Other	\$7,845.65
-	50106 - Administration\Other	\$1,388.82
-	50105 - OH & S	\$162.27
-	50104 - Training Expenses	\$355.45
-	50101 - Office Space Expense	\$5,743.14
	Total 50100 - VLLFI -Project Worker	\$15,495.33
-	50090 - Postage/Stamps	\$124.45
-	50065 - Insurance Fees	\$745.01
-	50045 - Catering	\$1,113.64
-	50040 - Bank Charges	\$90.00
-	50020 - Administration	\$410.28
-	50010 - Accounting	\$2,914.27
-	50005 - Vehicle	\$293.09
	Total 50000 - Business Services	\$22,011.32
-	51040 - 2016-2017 Network Grant	-
-	51044 - 2016-2017 Network Dir/Seeding	\$170.47
	Total 51040 - 2016-2017 Network Grant	\$170.47
-	51060 - 2017-2018 Network Grant	-
-	51064 - 2017-2018 Network Grant Dir/Seeding	\$4,151.72
	Total 51060 - 2017-2018 Network Grant	\$4,151.72
TOTAL EXPENSES		\$141,296.85

NET POSITION

Income	\$66,074.81
Cost of goods sold	\$0.00
Gross profit	\$66,074.81
Expenses	\$141,296.85
Other income	\$0.00
Other expenses	\$0.00
NET POSITION	-\$75,222.04

Balance sheet

LODDON PLAINS LANDCARE NETWORK

For the year ending 30 June 2019, accrual basis

ACCOUNT CODE	ACCOUNT NAME	BALANCE
ASSETS		
CURRENT ASSETS		
-	Bank - Bank - 10000 - Debit Card	\$428.38
-	Bank - 10400 - Charity Fund - LPLN	\$1,112.31
-	Bank - 10300 - Operating Acc - LPLN	\$89,781.19
-	Bank - 10200 - Trust Account - LPLN	\$15,428.56
1-1210	Accounts Receivable	\$2,200.00
TOTAL CURRENT ASSETS		\$108,950.44
NON-CURRENT ASSETS		
-	16000 - Vehicle Purchase	\$13,694.75
-	16001 - Provision for depreciation	-\$7,777.00
	Total 16000 - Vehicle Purchase	\$5,917.75
TOTAL NON-CURRENT ASSETS		\$5,917.75
TOTAL ASSETS		\$114,868.19
LIABILITIES		
CURRENT LIABILITIES		
2-1100	Accounts Payable	\$814.43
2-2000	Lake Bael Bael Funding in Advance	\$63,985.00
868	20400 - Payroll Liabilities	\$8,130.98
2-1380	Super Payable	\$1,352.46
2-1150	GST Payable	\$637.89
TOTAL CURRENT LIABILITIES		\$74,920.76
TOTAL LIABILITIES		\$74,920.76
NET ASSETS		\$39,947.43
EQUITY		
-	Membership Funds	\$88,981.28
3-1000	Retained Earnings Surplus/(Accumulated Losses)	\$26,188.19
-	Current year earnings	-\$75,222.04
TOTAL EQUITY		\$39,947.43



LODDON PLAINS LANDCARE NETWORK

Healthy environment - Healthy agriculture - Sustainable communities
To protect and enhance biodiversity across the Loddon Plains



Committee of Management 2018 - 2019



Ian Penny
President

Joined as an ordinary member of LPLN in 2014. He was Bird Box Project Co-ordinator 2015 - 2017 and a founding member Salisbury West LC Group and was President 2 years.

"I believe the Landcare movement has been responsible for improving the Loddon River's condition, by fencing off and replanting local sections of this important stream, improving and enhancing the overall environmental health of our area."



Fred Belli
Vice President

Joined in 2011, he attended the inaugural meeting in 2009. The current Treasurer for Friends of Terrick Terrick NP and was Convenor for the first 5 years and a member of Northern Plains CMN and Terricks Ridge LC Group.

"A group of people with different skills that take action with a good mixture that complements each other's roles"



John Childs
Ordinary Member

I've had a long-term active involvement with the Loddon Plains Conservation Management Network member groups, NUFG, FOTTNP and NPCMN. I am currently Photography/Facebook page manager for FOTTNP and NPCMN.

"The LPLN provides a spatial perspective of Landcare issues, and enables the economy of scale to implement viable solutions."



Colin Gitsham
Ordinary Member

Joined in 2014 He has been president of the Fairley Bael Bael Sandhill Lake Landcare Group for 11 years

"The committee of Management has good supportive examples and keeps connections between the groups and its great mentoring from the committee of management to pass on"



Michael Moore
Secretary

Our Secretary for the past nine years, and is a founding member since its inception in 2009. He is also the current President of the Wedderburn CMN.

"I enjoy working with like-minded people who are all helping to secure a healthier environment"



Kate Lee
Treasurer

Joined as an ordinary member of LPLN in 2015. She is a Landcare Group member of Mount Korong Eco-Watch (Secretary for 5 years) and a member of the Wedderburn CMN.

"I think Landcare is a great movement. It is uniquely placed to act as a bridge between the farming and conservation communities so we can all work together toward sustainable land management."



Cr Colleen Condliffe
Ordinary Member

Elected as an ordinary member of LPLN in 2012. She represents Loddon Shire for the Weeds Strategy and Awareness of Conservation of Native Vegetation. A founding member of Salisbury West LC group and past President.

"Always interested in environmental and sustainable land practices for now and for future generations."



Andy Hay
Ordinary Member

Former LPLN President and a founding member of the Network in 2009. Andy is also a member of the Kamarooka Landcare Group of which he is a past president and the current President of the Northern United Forestry Group

"It's good to see the Landcare groups working together and to give assistance when they require it."



Laurie Maxted
Ordinary Member

Member Joined LPLN at the inaugural meeting, he is a founding member and was the President of the LPLN until three years ago when he became Vice President. He is the current President of Loddon Vale Landcare Group (9 years) and a member for 10 years.

"I see the importance of the groups as good environmental forums, to have a good environment and leave it better than I got it."



Jenny Spence
Ordinary Member

An active member of many Landcare and Friends of groups, Jenny joined the LPLN as an ordinary member in 2018.



Chris Rothacker
Ordinary Member

Joined in 2012 He has been a member of Kinypanial Landcare for 5 years and was president for 2 and has been a member of Loddon Vale Landcare group for 5 years.

"I believe we are caretakers of the land for future generations"



Llywellyn Staiff
Ordinary Member

Llywellyn has been a member of Friends of Kooyoora and also assisted Inglewood Urban Landcare Group. Lywellyn joined the LPLN as an ordinary member in 2018.

"Being involved with strategies, projects and people that connect with the complexity of our natural surroundings is compelling and appealing".

2018-19 Annual Report prepared by Danny Pettingill for Loddon Plains Landcare Network Inc.

Published by Loddon Plains Landcare Network Inc. November 2019

Photos: Danny Pettingill unless otherwise credited.

Cover photos: Danny Pettingill, James Nelsson, unknown.

Back cover photos: James Nelsson, Malcolm Cousland, unknown

Page 2 photos: James Nelsson



LODDON PLAINS LANDCARE NETWORK

Healthy environment - Healthy agriculture - Sustainable communities
To protect and enhance biodiversity across the Loddon Plains





LODDON PLAINS LANDCARE NETWORK

Danny Pettingill
Landcare Facilitator, GOANNA Project Officer
Email: facilitator@lpln.org
Phone: 0490 412 430

ABN: 89 233 623 945 Inc. No: A0055095N
Post: P O Box 195, Wedderburn, Vic 3518
Website: www.lpln.org