

Loddon Plains Landcare Network

Annual Report 2018



protecting and enhancing the networks biodiversity



Healthy environment, Healthy agriculture, Sustainable communities





The GOANNA logo image depicts images of circles, dots, wheat grains, water droplets, leaves, and solid wavy lines embedded into the shape of a goanna. These images represent the People, Agriculture, Irrigation, Conservation, Diverse Communities, Corridors and Biolinks of revegetation throughout the Loddon Plains.

This image embodies the guiding principles of our Network, illustrating that by working together, the potential for socially acceptable landscape change and long term sustainable agriculture can be realized. The GOANNA acronym represents 'Group Organised Action Nurturing Natural Assets' which is what we are achieving. It also is a great image as our Network's area has two species of Goanna, the Tree Goanna (*Varanus varius*), sometimes known as the Lace Monitor, and the Sand Goanna (*Varanus gouldii*).

Project Partners



NORTH CENTRAL
Catchment Management Authority
Connecting Rivers, Landscapes, People

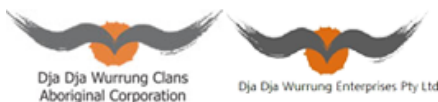


Table of Contents

PROJECT PARTNERS	1
LODDON PLAINS LANDCARE NETWORK	4
SECURING HEALTHY LANDSCAPES ON THE LODDON PLAINS	4
PRESIDENT’S REPORT	5
FACILITATOR’S REPORT	6
LANDCARE BRIEFING	8
GOANNA PROJECT HIGHLIGHTS	10
WHEEL CACTUS PROGRAM - MT BUCKRABANYULE	10
LONG SWAMP WETLAND RESTORATION	11
ACHIEVEMENTS AT A GLANCE	12
FINANCIAL REPORT	13
COMMITTEE OF MANAGEMENT 2017-2018	16



LODDON PLAINS LANDCARE NETWORK



LODDON PLAINS LANDCARE NETWORK

Securing Healthy Landscapes on the Loddon Plains

Since 2009, our Network of Landcare groups has successfully worked across the Loddon Plains in North Central Victoria. Our network has 18 groups, comprised of passionate people who are interested in improving their local environment. Our groups have been managing and protecting water resources, managing the health of their soils, improving agricultural practices to increase productivity, managing invasive pest plants and animals, protecting significant native flora and fauna, and undertaken activities that enhance natural values and agricultural returns.

Our network has more than 300 land managers, responsible for 300,000 hectares of private land, with many members also voluntarily assisting in the management of our public lands.

We work closely with government bodies, such as Parks Victoria, NCCMA, GWM Water, DEDJTR, DELWP and Loddon Shire, and in conjunction with Non-Government Organisations, such as Wettenhall Environment Trust, Trust for Nature, Bush Heritage and Dja Dja Wurrung Enterprises.

As a Network, we have successfully and collaboratively achieved our Network's stated objectives of:

- ✓ Landscape wide Conservation,
- ✓ Restoration and Enhancement of Biodiversity
- ✓ Community wide, multidisciplinary approach for caring for the environment
- ✓ Promote Sustainable Land and Water management practices that:
 - Balance economics and ecology,
 - Balance productivity and resource protection
 - Encourage sustainable agriculture.
- ✓ Support and represent the Member groups
- ✓ Broadcast information on Landcare and related matters
- ✓ Represent the interests of Network members on committees, bodies and associations
- ✓ Employ suitable qualified people as funds allow to assist in the coordination of initiatives and objectives of the Network
- ✓ Raise funds by gift or subscription as the committee of management may see fit.

Our Member Groups

<i>Bendigo Creek Floodplain Group</i>	<i>Mologa Landcare</i>
<i>Canary Island Landcare</i>	<i>Mt Korong Eco-Watch</i>
<i>East Loddon Landcare</i>	<i>North Central Landcare</i>
<i>Fairley Bael Bael Sandhill Lake Landcare</i>	<i>Northern Plains Conservation Management Network</i>
<i>Friends of Kooyoora</i>	<i>Northern United Forestry Group</i>
<i>Friends of Terrick Terrick National Park</i>	<i>Salisbury West Landcare</i>
<i>Inglewood Urban Landcare</i>	<i>Terricks Ridge Landcare</i>
<i>Kamarooka Landcare</i>	<i>Wedderburn Conservation Management Network</i>
<i>Loddon Vale Landcare</i>	<i>Wychitella District Landcare</i>

The Earth will not continue to offer its harvest, except with faithful stewardship. We cannot say we love the land and then take steps to destroy it for use by future generations.

- Karol Józef Wojtyła

President's Report



Once again, the LPLN has had a very busy and successful year, with many projects from our many Landcare groups taking place, overseen by the LPLN.

Wheel Cactus in the Loddon Shire has been an ongoing problem. LPLN along with Loddon Shire are making weed control its major project in the oncoming year.

As I am stepping down as President, I would like to thank my LPLN committee for all their support over the past two years. I would like to thank Michael Moore, our efficient Secretary, and James Nelsson our Facilitator. I would like to thank Jean McClymont, our long time Treasurer, who has decided to retire from the LPLN. We thank you for your many years of service and wish you all the best in the future. Also,

I thank my wife Carmel for all her support.

In closing, the LPLN is looking for new, younger members to continue the great work that the LPLN has achieved over many years.

Andy Hay- LPLN President



Facilitator's Report



I cannot believe how quickly the last year has gone. I started with the Loddon Plains Landcare Network over two and a half years ago, and have been made to feel very welcome at all your meetings and activity days. In this time, our network has continued to achieve sound agricultural and environmental outcomes. Members have been active in a whole range of activities, including Farming for Sustainable Soils, running cropping trials, investigating Controlled Traffic Farming, undertaking erosion control, weed control, planting shelterbelts, taking field trips, attending field days and undertaking a range of diverse conservation activities.

We have continued to be involved in several school and community planting days and environmental activities. We've built new connections within the community, including with Loddon-Mallee Interchange, Latrobe University and the Loddon Prison. We planted an indigenous food garden with the Preppies to grade 6's at St Mary's in Inglewood. We ran an environmental field trip and photography day with Inglewood Primary School grade 5 and 6's to the Inglewood Botanic gardens and Reservoir.



In March, we hosted the Bendigo Home Schooling network, where they learnt mapping on the LPLN tablets and took Photo's for the Kooyoora Wildflower Show and Photographic Competition. During September, over two sessions, we hosted participants from Loddon-Mallee Interchange, who visited Melville Caves and took photographs using LPLN tablets, chose their favourite images, edited them, had them developed, framed and entered them into the Wildflower Show's Photographic Competition.

Among some of our Networks achievements, we have run a weekend 'Science and Campfires' campout, where we installed 40 arboreal mammal nest boxes and reptile trapping transects and had talks from Ecologists, Biologists and NRM managers. We held a number of various training activities, including Mapping and Tablet workshops, held presentations by experts on Orchid recovery, Arboreal mammals,



Carbon sequestration, Ephemeral spring soaks, Artificial hollows and Nest boxes. We have had students from Latrobe University assisting with Cactus control and environmental plantings.

We again hosted the Bendigo Orienteers, where we undertook cactus control on Mt Kooyoora, and worked with the Loddon Prison to undertake ongoing cactus control at Mt Buckrabanyule.

Again, our Network has been successful in receiving a number of grants at both the local Group level and at the Network level, ranging from Maintenance grants, Revegetation projects, an arboreal mammal Nest box program, and we've purchased new equipment including 15 new cactus stabbers. We have continued with Cactus control at Mt Buckrabanyule and various sites across the LPLN Network. Our members from various groups continue to work

collaboratively with other groups, injecting and removing cactus, undertaking revegetation projects, and continuing our Citizen Science Projects.

I am pleased to say, we have built more ties within the broader community. We have continued to strengthen our connections with the NCCMA, DELWP, Parks and the Loddon Shire, as well as our important non-government partners, Wettenhall Environmental, Bush Heritage and Trust for Nature.

It has been very rewarding working with so many people who want to make a positive difference to how our local area will be for future generations. I would like to acknowledge the dedication and hard work of all the LPLN Committee of Management, but I think it is appropriate to recognize the hard work and commitment of three in particular. Firstly, Andy Hay, our President of the last three years,

who is stepping down from that role this year, but still staying on as a committee member. Secondly, our retiring Treasurer, Jean McClymont, for her 9 years of dedicated service to the Network. Finally, I would like to thank Michael Moore, our Secretary, whom I work with very closely, for his support, his commitment, and the effort that he puts in to make the Network such a success. Whilst I'm thanking people, I'd like to thank the many volunteers, that are our Network group members, who make what we do possible, and I'd like to especially thank my partner, Trudy. I often consider that everything that we do has an environmental impact, either good or bad; it is up to us to decide which it will be, and act appropriately. So thank you.



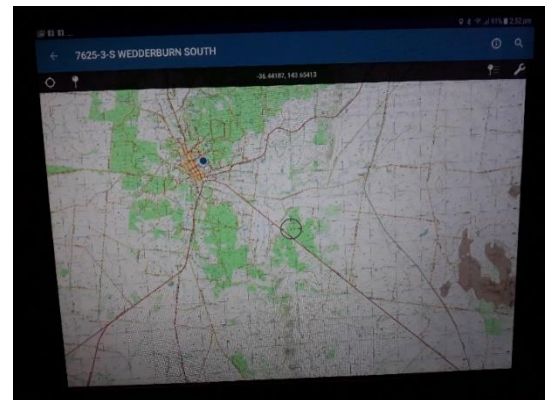
Landcare briefing



It certainly has been a different year compared to the last two years. We have not had the rainfall this winter, with the spring being drier than average, we have had many heavy frosts restricting soil moisture across the Loddon Plains area, and the long range forecast is for a likely El Niño. The low rainfall has resulted in many of our farmers having to cut their crops for bailing, rather than cropping. We hope this is not a prelude of long-term, ongoing dryness.

Over the last twelve months, we've hosted Bendigo TAFE NRM students on two occasions, undertaking bat trapping, giving talks on our Networks conservation efforts, camera trapping and engaging them to undertake bird monitoring at some of our sites.

This year, using our Network's Samsung Tablets, we have run several Mapping and Tablet workshops from Leitchfield to Kooyoora. We've run training for our Network member groups and school groups, with all training workshops well attended and well received. We have then applied these learnings to various programs in the field, including recording Cultural Heritage sites for the Dja Dja Wurrung, plotting threatened orchid sites for the Orchid recovery program, and mapping areas where we have undertaken pest plant and animal control.



If any groups are still interested in the attending a mapping workshop (or a refresher), further training is available on request. Training in the use of these tablets will give you insight into how to use other Android devices, such as phones. I can run training for small or large groups. These tablets were funded through the DELWP Landcare Network Grants; unfortunately, I am disappointed to advise that DELWP, in their wisdom, have decided to stop the Network grant option.



I have attended many group meetings; including assisting with groups AGMs. I've given guidance and assistance in grant applications and assisting in grant administration. I've spoken about our Network's achievements at various NRM symposia, given television interviews, written submissions, newspaper articles and grants. I've attended many meetings, representing our Landcare Network to government, statutory organisations, corporate utilities, NGO's, philanthropic trusts, and of course, most importantly I've met with our members and various landholders.

We continue to work together with the Dja Dja Wurrung, Parks, GWM Water, DELWP, DEDJTR, Bush Heritage Australia, Trust for Nature, Wettenhall Environmental Trust, Victorian Farmers Federation and the Loddon Shire. Over this time, I have provided information to Landholders on erosion control, planting techniques, revegetation and weed management. I've assisted groups with on-ground action and forwarded information relevant to our network through email, our website and social media.





I've facilitated many Cactus control activities, transporting cactus control equipment across the Network, and stabbed a metric shipload of cacti. Together we have held community information sessions, workshops, field days, and represented the LPLN at various stalls including the Wildflower show and the Naturally Loddon festival. Again, this was made possible with the work of many passionate volunteers, providing their time, their experience, their labour, and their enthusiasm.



Goanna Project Highlights

Wheel Cactus Program - Mt Buckrabanyule

This site continues to be a major problem for our Network; the 800-hectare site is continuing its steady spread across the countryside, in spite of the months of labour and biological controls. As you can see in the attached images to the left, the inexorable spread of this terrible agricultural and environmental weed can be seen spreading over the years.

The Wychitella Landcare group have been busy at various sites around Mt Buckrabanyule throughout the year, and I have recently managed to get ongoing assistance from the Loddon Prison, with their crew working on cactus control, using stem injection, grubbing out small plants and spreading the biological control by spreading the cochineal larvae. The Landcare grant of \$10,000 enabled us to purchase another 15 Backpack stabbers and another 10 drums of Glyphosate.

These plants continue to provide the district with a continuous seed bank of this threat to our agricultural assets and the environment. The best time to deal with wheel cactus is when you first observe it. Ideally, when the plant is under 30 cm in height it is easy to grub out and remove. Grubbed out plants should be buried or placed under black plastic, which will solarise the plant. Remember that even if a single pad is left in contact with soil or mulch, it will sprout. This problem really requires sustained and significant action, both at Mt Buckrabanyule and across the Network.



Long Swamp Wetland restoration

We have again been given the opportunity from the NCCMA to demonstrate our Networks ability to deliver on landscape wide restoration works. Long Swamp is an ephemeral wetland, located within the Moolort plains. This 180 hectare, Trust for Nature protected property is a significant environmental asset with important cultural heritage values.



The site has 25 hectares of terrestrial, riparian area contains some magnificent remnant vegetation but will require infill and understorey revegetation. The floor of this wetland has 82 hectares of low to medium infestation of spiny rush and 42 hectares of heavy infestation.

I have met with NCCMA, Trust for Nature and representatives of the Dja Dja Wurrung, to discuss the approach for revegetation and weed control. I walked, mapped and ground truthed the site. I have engaged Dja Dja Wurrung enterprises to undertake the weed control and to assist with the plantings on site. Kangaroos are in high numbers in the area and provide issues with herbivory of the seedling, requiring robust tree guards and management strategies for understory plantings.

With funding from the NCCMA, we provided the fencing material for the enclosure plots and to make tree guards for individual Red gums being planted around the perimeter of the wetland. Trust for Nature had engaged Rakali Wetland Ecology to do a vegetation survey of the wetlands, and a temporary levy has been installed to raise water levels that are closer to original flow regime.



The wetland cannot be restored to pre-European conditions, but we can restore some of the ecological functions that have been lost to this site. The site offers many challenges, including managing the grazing pressure from kangaroos, but revegetating the surrounding terrestrial areas, and managing the biomass, this site should again become a functional ephemeral wetland, episodically providing the ecological resources required to provide habitat for wetland birds like the Brolga to breed and allow for the ingress of water back into the natural aquifer.

Achievements at a Glance

NETWORK/NETWORK SUPPORTED	2017/2018
Projects operational	14
Member groups	18
Applications written or reviewed	18
Kilometres driven	23,002 km

On-ground works	
Trees planted	3,300
Direct Seeding	-
Revegetation prep	60 ha
Weeds	150 ha
Serviced the Cactus equipment	8

Community engagement	
Events	55
Participants (half day)	430
Participants (full day)	80
Training/events	14
Blog/website posts/articles	26
Facebook post	261

Monitoring	
Bird monitoring surveys	180
Monitoring weekends	4

Networking/lobbying	
Weed Control Committee meetings	3
Meetings attended	138
Workshops	21
Officially represented Landcare	59
New partnerships	4

Preliminary Final figures	
Kilometres of fencing	1.8 km
Kilograms of seed direct seeded	- kg
Understorey tubestock	500
Kilometres of Direct seeding	- km
Hectares of ephemeral wetlands protected	180 ha
Hectares surrounding ephemeral wetlands fenced off	- ha
Hectares total area protected	184 ha
Red Gum tubestock planted with follow up watering	650

Financial Report

Profit and loss

LODDON PLAINS LANDCARE NETWORK
For the year ending 30 June 2018, accrual basis

CODE ACCOUNT INCOME	AMOUNT
- 41100 -Pyramid Hill FSS Grant	\$25,000.00
- 41101 - Activity 1	\$17,500.00
Total 41100 -Pyramid Hill FSS Grant	\$42,500.00
- 41000 - Refund of Expenses	\$800.00
- 40700 - Dept of Sust - DELWP	\$47,755.68
- 40500 - NCCMA Grant Income	\$20,000.00
- 405hv - 2017-2018 GOANNA Project Worker	\$35,000.00
Total 40500 - NCCMA Grant Income	\$55,000.00
- 40000 - Income	-
- 40035 - Interest Received	\$2,658.31
- 40010 - LPLN - Memberships	-\$33.64
Total 40000 - Income	\$2,624.67
TOTAL INCOME	\$148,680.35
GROSS PROFIT	\$148,680.35

CODE ACCOUNT EXPENSES	AMOUNT
- 51100 - 2017-2018 NCCMA Wetlands Project	-
- 51105 - 2017-2018 NCCMA Wetlands Site Preparation	\$2,640.00
Total 51100 - 2017-2018 NCCMA Wetlands Project	\$2,640.00
- 51080 - 2017-2018 Schools Engagement	-
- 51083 - 2017-2018 Schools Engagement Plant/Reveg	\$190.91
Total 51080 - 2017-2018 Schools Engagement	\$190.91
- 51030 - 2015-2016 Network Grant	-
- 51038 - 2015-2016 Network Materials	\$10,849.29
- 51035 - 2015-2016 Network Grant Site Preparation	\$64.95
- 51033 - 2015-2016 Network Grant Plant/Reveg	\$181.82
Total 51030 - 2015-2016 Network Grant	\$11,096.06
- 60500 Kamarooka Wetlands	-
- 60540 Kamarooka Contractors	\$3,000.00
- 60530 - Materials	\$14,958.00
Total 60500 Kamarooka Wetlands	\$17,958.00
- 60400 - Pyramid Hill FSS	\$360.00
- 60440 - Activity 4	\$6,333.20
- 60430 - Activity 3	\$13,649.20
- 60420 - Activity 2	\$13,153.96
- 60410 - Activity 1	\$12,038.28
Total 60400 - Pyramid Hill FSS	\$45,534.64
- 60200 - Refund of Grant	\$24,980.00
- 60100 - Superannuation	\$5,589.53

66000 60000 - Payroll Expenses	\$64,069.28
- 50200 - FSS	-
- 50240 - Yield Prophet	\$128.07
- 50220 - Group Learning	\$318.81
Total 50200 - FSS	\$446.88
- 50000 - Business Services	\$4,900.84
- 50100 - VLLFI -Project Worker	-
- 50107 - Travel Other	\$5,085.52
- 50106 - Administration\Other	\$4,961.78
- 50105 - OH & S	\$229.00
- 50104 - Training Expenses	\$70.00
- 50101 - Office Space Expense	\$2,327.60
Total 50100 - VLLFI -Project Worker	\$12,673.90
- 50080 - Membership Fees	\$485.60
- 50045 - Catering	\$918.18
- 50040 - Bank Charges	\$91.92
- 50020 - Administration	\$151.33
- 50010 - Accounting	\$3,082.72
- 50005 - Vehicle	-
- 50095 MV Depreciation	\$2,958.00
Total 50005 - Vehicle	\$2,958.00
Total 50000 - Business Services	\$25,262.49
- 40400 -Credit Card Temp Exp Acc	\$2,242.60
- 51040 - 2016-2017 Network Grant	-
- 51046 - 2016-2017 Network Weed Treatment	\$479.55
Total 51040 - 2016-2017 Network Grant	\$479.55
51010 51010 - 2016-2017 NCCMA Kamarooka Project	\$631.82
- 51013 - Kamarooka Project Plant/reveg	\$15,623.94
Total 51010 - 2016-2017 NCCMA Kamarooka Project	\$16,255.76
- 51060 - 2017-2018 Network Grant	-
- 51064 - 2017-2018 Network Grant Dir/Seeding	\$1,026.90
Total 51060 - 2017-2018 Network Grant	\$1,026.90
TOTAL EXPENSES	\$217,772.60
NET POSITION	
Income	\$148,680.35
Cost of goods sold	\$0.00
Gross profit	\$148,680.35
Expenses	\$217,772.60
Other income	\$0.00
Other expenses	\$0.00
NET POSITION	-\$69,092.25

Disclaimer: the LPLN CoM had not yet accepted these accounts at time of printing.



LODDON PLAINS LANDCARE NETWORK

Balance sheet

LODDON PLAINS **LANDCARE** NETWORK
For the month ending 31 July 2018, accrual basis

ACCOUNT CODE	ACCOUNT NAME	BALANCE
ASSETS		
CURRENT ASSETS		
-	Bank - 10400 - Charity Fund - LPLN	\$1,101.40
-	Bank - 10300 - Operating Acc - LPLN	\$33,033.78
-	Bank - 10200 - Trust Account - LPLN	\$44,545.69
-	Bank - 10100 - General Account - LPLN	\$492.10
1-1210	Accounts Receivable	\$39,377.07
	TOTAL CURRENT ASSETS	\$118,550.04
NON-CURRENT ASSETS		
-	16000 - Vehicle Purchase	\$13,694.75
-	16001 - Provision for depreciation	-\$7,777.00
	Total 16000 - Vehicle Purchase	\$5,917.75
	TOTAL NON-CURRENT ASSETS	\$5,917.75
	TOTAL ASSETS	\$124,467.79
LIABILITIES		
CURRENT LIABILITIES		
-	Bank - 99999 Loddon Plains L/C Network	-\$944.94
2-1100	Accounts Payable	\$1,093.60
868	20400 - Payroll Liabilities	\$4,250.98
2-1380	Super Payable	\$1,083.22
2-1150	GST Payable	\$3,815.46
	TOTAL CURRENT LIABILITIES	\$9,298.32
	TOTAL LIABILITIES	\$9,298.32
	NET ASSETS	\$115,169.47
EQUITY		
-	Membership Funds	\$88,981.28
3-1000	Retained Earnings	\$95,280.44
	Surplus/(Accumulated Losses)	
-	Current year earnings	-\$69,092.25
	TOTAL EQUITY	\$115,169.47

Disclaimer: the LPLN CoM had not yet accepted these accounts at time of printing.



LODDON PLAINS **LANDCARE** NETWORK

Committee of Management 2017-2018



Andy Hay -
President

Our President for the past three years is a founding member since its inception in 2009. He is also a member of the Kamarooka Landcare Group of which he is a past president and the current President of the Northern United Forestry Group

"It's good to see the Landcare groups working together and to give assistance when they require it."



Michael Moore -
Secretary

Our Secretary for the past nine years, and is a founding member since its inception in 2009. He is also the current President of the Wedderburn CMN and Convenor of the Friends of Kooyoora

"I enjoy working with like-minded people who are all helping to secure a healthier environment"



Jean McClymont -
Treasurer

Our Treasurer for the past nine years is a founding member, since its inception in 2009. A member of Salisbury West LC Group since 1995, she held the roles of Treasurer, Secretary, Voluntary Coordinator and Facilitator of the Salisbury west/Mt Korong FSS group.

"I believe Community education and involvement I feel is Key to understanding the need to act now for our environment."



Laurie Maxted –
Vice President

Joined LPLN at the inaugural meeting, he is a founding member and was the President of the LPLN until three years ago when he became Vice President. He is the current President of Loddon Vale Landcare Group (9 years) and a member for 10 years.

"I see the importance of the groups as good environmental forums, to have a good environment and leave it better than I got it."



Fred Belli
Ordinary Member

Joined in 2011, he attended the inaugural meeting in 2009. The current Treasurer for Friends of Terrick Terrick NP and was Convenor for the first 5 years and a member of Northern Plains CMN and Terricks Ridge LC Group.

"A group of people with different skills that take action with a good mixture that complements each other's roles"



Kate Lee
Ordinary Member

Joined as an ordinary member of LPLN in 2015. She is a Landcare Group member of Mount Korong Eco-Watch (Secretary for 5 years) and a member of the Wedderburn CMN.

"I think Landcare is a great movement. It is uniquely placed to act as a bridge between the farming and conservation communities so we can all work together toward sustainable land management."



Cr Colleen Condliffe
Ordinary Member

Elected as an ordinary member of LPLN in 2012. She represents Loddon Shire for the Weeds Strategy and Awareness of Conservation of Native Vegetation. A founding member of Salisbury West LC group and past President.

"Always interested in environmental and sustainable land practices for now and for future generations."



Ian Penny
Ordinary Member

Joined as an ordinary member of LPLN in 2014. He was Bird Box Project Co-ordinator 2015 – 2017 and a founding member Salisbury West LC Group and was President 2 years.

"I believe the Landcare movement has been responsible for improving the Loddon River's condition, by fencing off and replanting local sections of this important stream, improving and enhancing the overall environmental health of our area."



Chris Rothacker -
Ordinary Member

Joined in 2012 He has been a member of Kinypanial Landcare for 5 years and was president for 2 and has been a member of Loddon Vale Landcare group for 5 years.

"I believe we are caretakers of the land for future generations"



Colin Gitsham
Ordinary Member

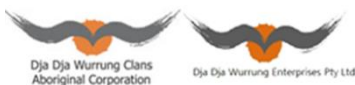
Joined in 2014 He has been president of the Fairley Bael Bael Sandhill Lake Landcare Group for 11 years

"The committee of Management has good supportive examples and keeps connections between the groups and its great mentoring from the committee of management to pass on"



Loddon Plains Landcare Network

Web: www.lpln.org



Loddon Plains Landcare Network
James Nelsson
Facilitator and Goanna Project Worker
Post: P O Box 16, Wedderburn, Vic 3518
Email: facilitator@lpln.org
Phone: 0490 412 430

Loddon Plains Landcare Network
ABN: 89 233 623 945 Inc. No: A0055095N
Post: P O Box 65, Wedderburn, Vic 3518
Website: www.lpln.org
Phone: 0447 095 501