



Securing healthy landscapes on the **Loddon Plains**

Loddon Plains Landcare Network Inc.
2013-16 Strategic Plan



LODDON PLAINS LANDCARE NETWORK



Landcare
Victoria

GOANNA PROJECT

The GOANNA (Group Organised Action Nurturing Natural Assets) Project is the Network's flagship partnership project with The Norman Wettenhall Foundation (NWF). It is a landscape-scale restoration project designed to protect and enhance biodiversity across the Loddon Plains.

The Loddon Plains is rich in natural assets. It is home to a diverse range of flora and fauna, along with rivers, creeks and wetlands that have supported aboriginal communities for thousands of years and still today sustain important water-dependent ecosystems.

It is also an area recognised for its high quality agricultural production based around grain and fodder crops, lamb and wool production, dairying and horticulture. The Loddon Plains Landcare Network recognises that a healthy environment is fundamental to a thriving agricultural sector and a sustainable community.

With financial assistance from The Norman Wettenhall Foundation, the Network has produced a BLUEPRINT for the long-term conservation of biodiversity in the network area - to be achieved through coordinated, large-scale landscape restoration projects.

A series of large-scale projects, developed in conjunction with member groups, are being scoped using a process called 'INFFER' (the Investment Framework for Environmental Resources).

In addition to the proposed on-ground works, community education is a vital component of the GOANNA Project. Workshops and field days will be extended to the wider community wanting to learn more about the importance of biodiversity in sustainable farming systems.



STRATEGIC PLAN OBJECTIVES

Environmental stewardship and biodiversity conservation

- h Promote landscape-scale biodiversity conservation and landscape integrity to enhance the quality of the natural environment across the Network area
- h Communicate baseline data, undertake research, and build community capacity to do the works
- h Continue to demonstrate how environmental stewardship is part of sustainable agriculture
- h Implement the GOANNA Project

Member Groups and Membership

- h Support member groups with funding applications and action planning. Facilitate their participation in landscape-scale projects
- h Build land manager capacity by sharing problems and solutions unique to the Loddon Plains
- h Maintain an accurate contact list and complete network area demographic profile
- h Profile all member groups and their priority NRM issues.

Funding

- h Deliver on existing funding commitments (State and Federal Government, NWF) and seek additional funding for on-ground works
- h Follow through with Deductible Gift Recipient (DGR) status [application lodged]
- h Explore start-up of Network-led NRM enterprise in the area



- SUMMARY OF KEY THEMES

Collaboration and Partnerships

- h Work with other groups and organisations to enhance outcomes for the member groups and achieve Network priorities
- h Work with The Norman Wettenhall Foundation to implement the GOANNA Project and achieve biodiversity conservation as the partnership priority.
- h Work to strengthen all partnerships (funders; local governments; NRM organisations and community groups) for the benefit of the Network and its member groups

Education, Communication and Promotion

- h Communicate clear messages with the aim of achieving landscape-scale biodiversity conservation and increasing the profile of the Network
- h Develop and implement a 'Schools Education Program'
- h Continue to develop and implement the 'Landholder Peer Group Mentoring Program'
- h Develop website as a knowledge hub and communication tool for the network area
- h Communicate Network priorities and funding approach to member groups

Governance

- h Ensure Committee of Management and Network staff are clear on their roles, purpose and priorities
- h Ensure the Network works within the rules of its constitution
- h Develop and implement a training program and succession plan for the Committee of Management



PRIORITY PROJECTS

- h Wheel cactus control on Mt Buckrabanyule
- h A linkage from Terrick Terrick NP to Kow Swamp
- h Protecting remnant vegetation on the Loddon Plains
- h Loddon Foothills project
- h Northern Wetlands and Woodlands
- h Calivil Creek (Black Box) project
- h Biodiversity Monitoring project

Collaborative Projects

- h Kooyoora Connections
- h Protecting and enhancing the Kamarooka Wetlands

Extension Projects

- h 2013-14 Education Workshop series
- h Peer Group Mentoring Program



Loddon Plains Landcare Network Inc. (LPLN)

Formed in 2009 the LPLN is an Incorporated Body comprising a Committee of Management and 16 member groups:

Bendigo Creek Floodplain Group
East Loddon Landcare Group
Fairley Bael Bael Sandhill Lake Landcare Group
Friends of Kooyoora
Friends of Terrick Terrick National Park
Inglewood Urban Landcare Group
Kamarooka Landcare Group
Loddon Vale Landcare Group
Mologa Landcare Group
North Central Landcare Group
Northern Plains Conservation Management Network
Northern United Forestry Group
Salisbury West Landcare Group
Terricks Ridge Landcare Group
Wedderburn Conservation Management Network
Wychitella District Landcare Group

The 16 member groups value their natural environment and are working to protect and enhance the area's biodiversity and strengthen their local communities.

Straddling the Loddon River, the Network covers parts of three local government areas on the Loddon Plains of north central Victoria. It brings together more than 300 landowners who manage more than 300,000 ha of private land. Some member groups also work closely with Parks Victoria and the Department of Environment and Primary Industries in helping to manage the public land throughout the region.

2013-14 Committee of Management

Laurie Maxted (President; member Loddon Vale Landcare)

Andy Hay (Vice President; member Kamarooka Landcare and Northern United Forestry Group)

Michael Moore (Secretary; member Wedderburn CMN)

Jean McClymont (Treasurer; member Salisbury West Landcare)

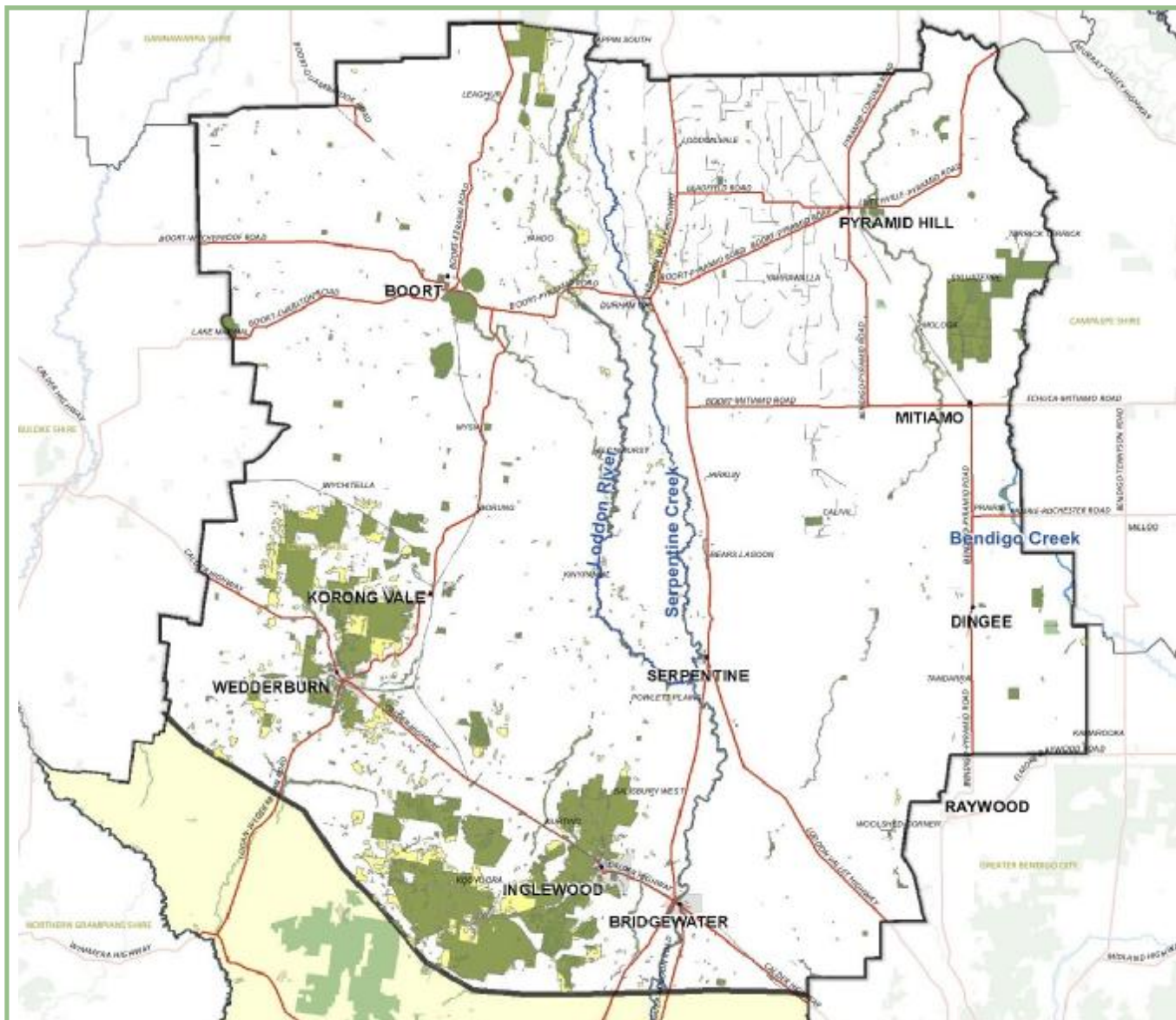
Bill Twigg (Ordinary member; member East Loddon Landcare)

Chris Rothacker (Ordinary member; member Loddon Vale Landcare)

Fred Belli (Ordinary member; member Friends of Terrick Terricks and Terricks Ridge Landcare)

Ian Penny (Ordinary member; member Salisbury West Landcare)

Colleen Condliffe (Ordinary member; Loddon Shire Council)



Contacts:

Anthony Gallacher, Landcare Network Facilitator

Phone: (03) 5446 9249; Mobile 0447 095 501

E: facilitator@lpln.org; Web: www.lpln.org

Michael Moore, Secretary, Phone: (03) 5494 3542